

COMPANY PROFILE



Dear Sir,

We would like to introduce ourselves and would like to request you to register our firm in the list of you potential and active vendors for the need of precision components and assemblies, machine building, fabrication and reverse engineering.

We are in the mentioned segment with the best skills for various types of engineering, chemical, plastics, automobiles, pharmaceutical, textile and machine building sectors. We manufacture the batch quantity as per schedule need. We are able to manufacture and deliver the items in the desired quantity in committed time.

We have basic infrastructure,

1400 sq. feet of land with RCC shed, we have the below listed assets,

- 1) Vertical head universal DRO milling machine imported from Taiwan with accuracy of 5 micron
- 2) Lathe – 7’ with dog chuck, face plate, steady rest through chuck
- 3) Lath – 4’ 1/2 with dog chuck, face plate
- 4) Precision drilling machine
- 5) 400A transformer with the arc welding equipments
- 6) 2000X3000X32 mm datum plate, plano milled for reference datum for precision welding jobs
- 7) Crane with lifting capacity of 2 tonnage

Above all are newly installed, accurate and precision machines. Necessary precision measuring instruments are also available to qualify the components. Other processes like EDM, wire cut, CNC milling, CNC turning, boring, surface grinding, dynamic balancing and various types of coating and heat treatment we can manage within industrial estate.

We have a desire to become your best vendor by offering best quality components, assemblies and services so clearly outstanding in terms of innovation, quality, delivery and value that we are consistently the “SUPPLIER OF CHOICE”. While manufacturing we always take care of need of customer’s customer, even though it is silent on drawing.

Our GST No. is: 24AECPS5563A1ZR

If we are fitting in your requirement please let us know or call on us for further details. Other data's like turnover and present customers will be given in person or need bases.

Contact details are as below,

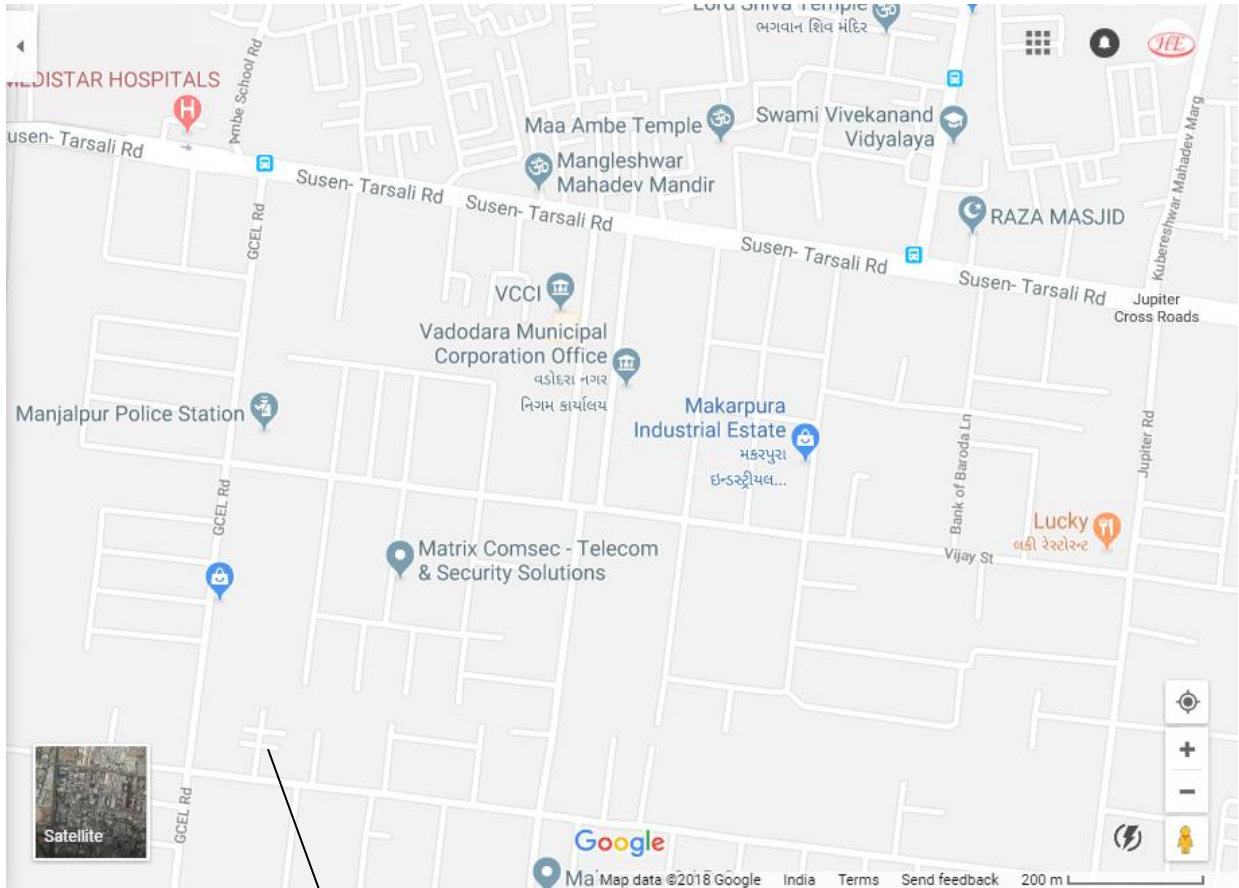
Contact person: N.B. Shah/Archan Shah

Contact Numbers: (M) +91 9825032294/8980211943

Email ID: hinaengineers32@gmail.com

Website: www.hinaengineers.biz

Address: 490-491/D-22, Opp. Himalaya Machinery, GIDC Industrial Estate, Makarpura, Vadodara 390010 (Gujarat, IN)



Yours faithfully,

WE ARE HERE!

For HINA ENGINEERS

N.B. SHAH

PERSONAL PROFILE

Dear Sir,

I am Narendra Shah, 59 years old, resident of city Vadodara. I belong to native Nadiad. I did my diploma in mechanical engineering in 1978 from B&B Polytechnic, Vallabh Vidya Nagar.

I started my career from 1978 onwards and built up for 25 years totally, successful as a professional in Quality Assurance & Manufacturing in a various reputed engineering companies. I have a very sound track record of experience of companies like,

Sr. No.	Company	Manufacturing
1	Kabra Extrusion Technic Ltd. Daman	Plastic processing machineries
2	Kolsite Machines Fabric Ltd. Daman	Plastic processing machineries
3	Chicago Pneumatic India Ltd. Halol	Air compressor and pneumatic tools
4	Klockner Windsor India Ltd. Ahmedabad	Plastic processing machineries
5	FAG Bearings, Vadodara	Antifriction bearings
6	Gujarat Setco Clutch Ltd. Halol	Clutch plates for automobiles
7	Tak-Machinery Ltd. Ahmedabad	Material handling equipments
8	Suessen Textiles Bearings, Vadodara	Textile bearings and allied products
9	Mc-Gaw-Ravindra Laboratories, Ahemdabad	Life saving drugs
10	Baroda Electric Meters Ltd, Vallabh Vidyanagar	Energy meters

I have started business in Makarpura, Vadodara in the name of M/s HINA ENGINEERS from January 2004.

I am very much confident in making components as per your need and specification where you need not have to inspect/test components/assemblies at your end. You can get components/assemblies with inspection report. If item is in multiple quantities, we can provide sampling inspection report on need or regular basis.

I am very much interested individual and fully aware of various engineering processes and hence I have the ability to make the components or unit assembly faster, better, consistent and competitive in price.

I am experienced and knowledgeable person and aware of selection of raw material with respect to application, selection of process, process sequence of manufacturing, reverse engineering, all bough out components, making

drawings, SQC measurement and calibration, problem solving technique, metallurgy, documentation presentation, ISO systems.

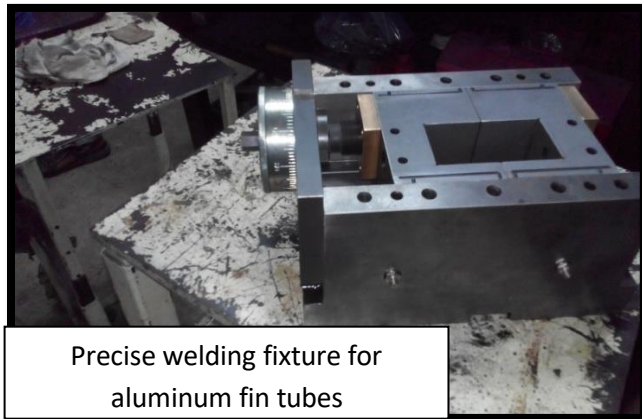
This is for your information and active consideration.

Yours faithfully,

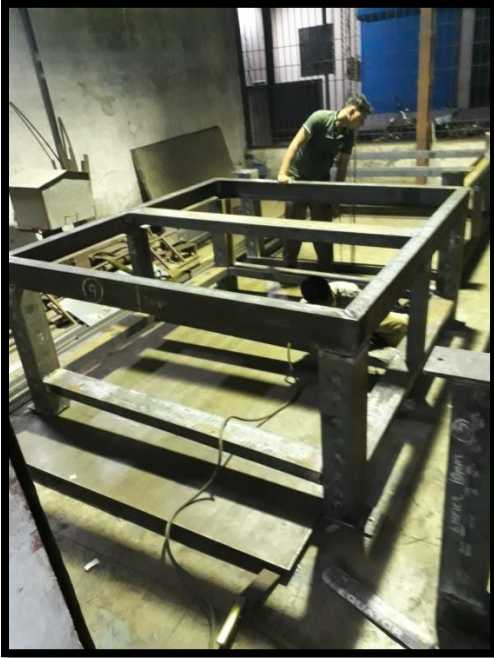
For HINA ENGINEERS

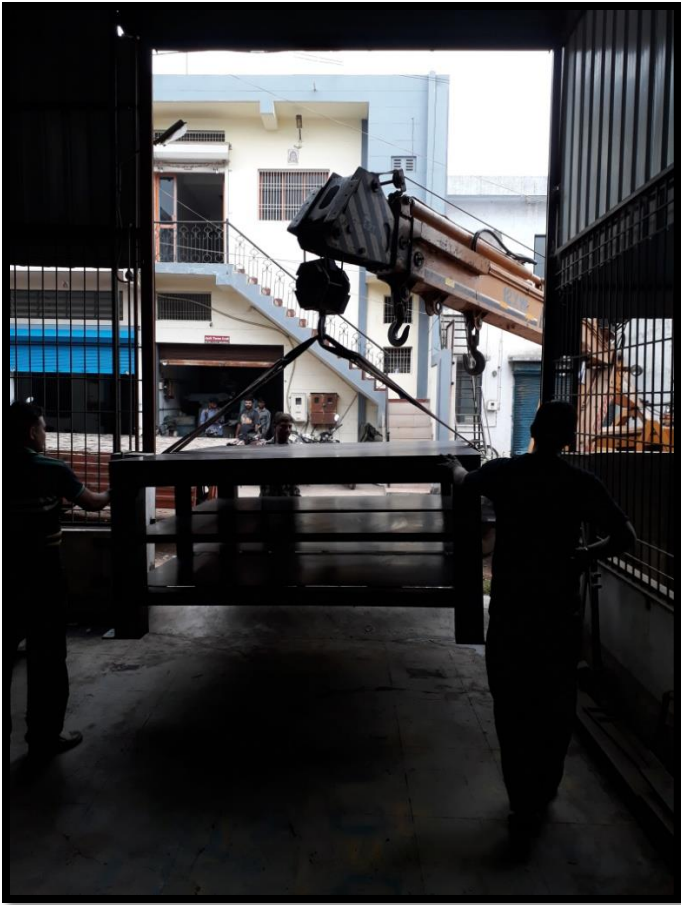
N.B. SHAH

WORK GALLERY



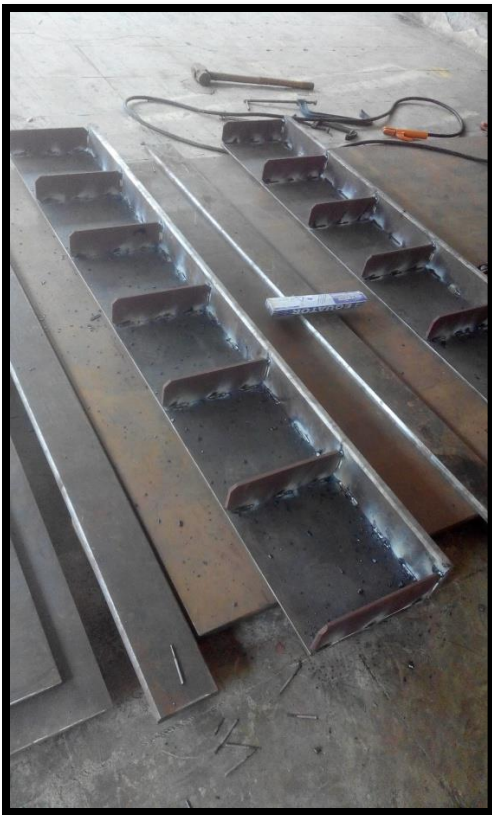
Our fabrication setup





Fabrication and machining of
3500X2084X1000 mm structured table,
flatness and linear tolerances within 0.2
mm





In-process inspection and in-house precision job working on milling within 5 micron



Well equipped and roofed area for
machine assembly with the facility of
crane

NRF BAR & PLATE JIG.

TOTAL LENGTH X TOTAL WIDTH X TOTAL HEIGHT

2.725 MTRS 2.380 MTRS 3.256 MTRS.
(8.93 FEET) (7.80 FEET) (10.67 FEET.)

TOTAL NET WEIGHT.

2960 Kgf.
(6519 pounds)

M/C NAME : BAR & PLATE CORE ASSLY. JIG FOR BHAILI
PROJECT REF : B/ENG/PA/NRF/CAJ, REV=00 Dtd :- 28.06.14
DRG. NO. : RA 000.009 452 3, REV-2 18.04.2015
PRODUCT DIMENSIONS : CORE HEIGHT MAX 1100MM, MIN 140MM
CORE WIDTH MAX 800MM, MIN 35MM
CORE THICKNESS MAX 200MM, MIN 40MM
MFG. BY VENDOR : HINA ENGINEERS, BARODA, INDIA
Email :- hinaengineers32@gmail.com
VENDOR CODE : 13288, ITEM CODE : CAPSET 001
PO NO./DATE : 1170002078, 07.05.2015

Completion of 2725X2380X3256 mm huge export machine, sent to Netherland. Whole structure dimensions within the tolerance of 0.2 mm



Loading, handling and dispatch of the finished machines

REWARDS

17.07.2017



SCHAEFFLER



SUPPLIER EVALUATION – JAN TO June 2017

Kind Attention : Mr NB Shah

M/s Schaeffler India congratulates you for being “AB” grade Supplier as per our Supplier Evaluation system for the period mentioned above.

SUPPLIER	: HINA ENGINEERS
Evaluation Ratings	
-	
GKZ (Overall Supplier Evaluation rating) : 89	
GKZ (Overall Supplier Evaluation Grade) : AB	
QZ (Overall Quality rating) : 90	
QZ (Overall Grade) : A	
LZ (Overall Delivery Rating) : 88	
LZ (Overall Delivery Grade) : AB	

Enclosed below is the Classification of Suppliers for Supplier Evaluation

Supplier Evaluation Classification of suppliers
The ABC classification of suppliers is generated from the overall score which is calculated for the evaluation period.
In the case of the "Performance Monitor", the classification of a supplier is represented using the colours in the following table.

Points (%) / classification	Meaning
100 ≥ A ≥ 90	The requirements are met in full
90 > AB ≥ 80	The requirements are largely met The evaluation result shows that there is potential for improvement from the supplier
80 > B ≥ 60	The requirements are not sufficiently met The supplier must introduce suitable measures for improvement and, if requested to do so by the supplied Schaeffler location, report on the progress of their implementation
60 > C ≥ 0	The requirements are not met The supplier must introduce suitable measures for improvement and, if requested to do so by the supplied Schaeffler location, report on the progress of their implementation. Depending on the circumstances, Schaeffler reserves the right to verify implementation of the measures on site.

Applicable appendices

Appendix 1 Supplier evaluation – Evaluation criteria
(see [www.Schaeffler.de/Suppliers/Quality/Production material/ S 296001 Part 5, Appendix: 1](http://www.Schaeffler.de/Suppliers/Quality/Production%20material/S%20296001%20Part%205,Appendix%201))

We believe “Quality is the attitude of mind”, and there will not be hassles or conflict on the quality matters. We will assure the process to obtain the desired results.

Thank You